

IN-SIGHT 2000 SERIES VISION SENSORS

In-Sight® 2000 series vision sensors combine the power of an In-Sight vision system with the simplicity and affordability of a vision sensor. Ideal for solving error-proofing applications, these vision sensors set new standards for value, ease of use and flexibility thanks to a powerful combination of proven In-Sight vision tools, a simple setup, and a modular design featuring field changeable lighting and optics.

The In-Sight 2000 series includes an integrated, high-performance image formation system consisting of field interchangeable lenses and a patent-pending LED ring light that produces even, diffuse illumination across the entire image and eliminates the need for costly external lighting. Lenses and a variety of colored lights can be easily swapped out as needed to meet application requirements.

Together with the In-Sight Explorer EasyBuilder® interface, which provides a fast, step-by-step application setup, the In-Sight 2000 series allows even novice users to achieve extremely reliable inspection performance in nearly any production environment.

In-Sight 2000 series vision sensors can also be configured for in-line and right-angle mounting installation. This modular body design provides maximum flexibility to mount in tight spaces, simplifies wiring and optical paths, and minimizes the need to design new mechanical fixtures.



In-Sight 2000 Series: Features at-a-glance

- Affordable vision sensor powered by In-Sight Explorer software and EasyBuilder
- Simple for both new and existing users to address automated inspection requirements
- Proven, reliable Cognex In-Sight vision tools
- Same In-Sight Explorer interface used in advanced In-Sight vision systems
- Field changeable integrated optics and light
- Compact, modular design

Fast, intuitive setup with EasyBuilder

The EasyBuilder setup interface is ideal for solving simple presence/absence inspections. Basic pass/fail inspections can be accomplished with intuitive, point-and-click setup tools. When more complex inspections are required, users can build on their experience to create vision applications using more advanced In-Sight vision systems—in the same In-Sight Explorer interface.



Powerfully simple and affordable vision sensors

Unmatched flexibility

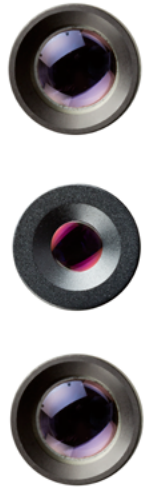
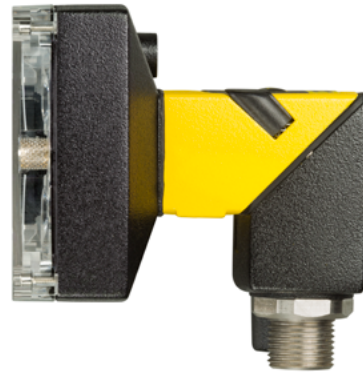
Field interchangeable lighting and optics make it easy to adapt to virtually any production line environment.

Powerful integrated light

Diffuse illumination technology enables robust vision inspection without the need for costly external lighting.

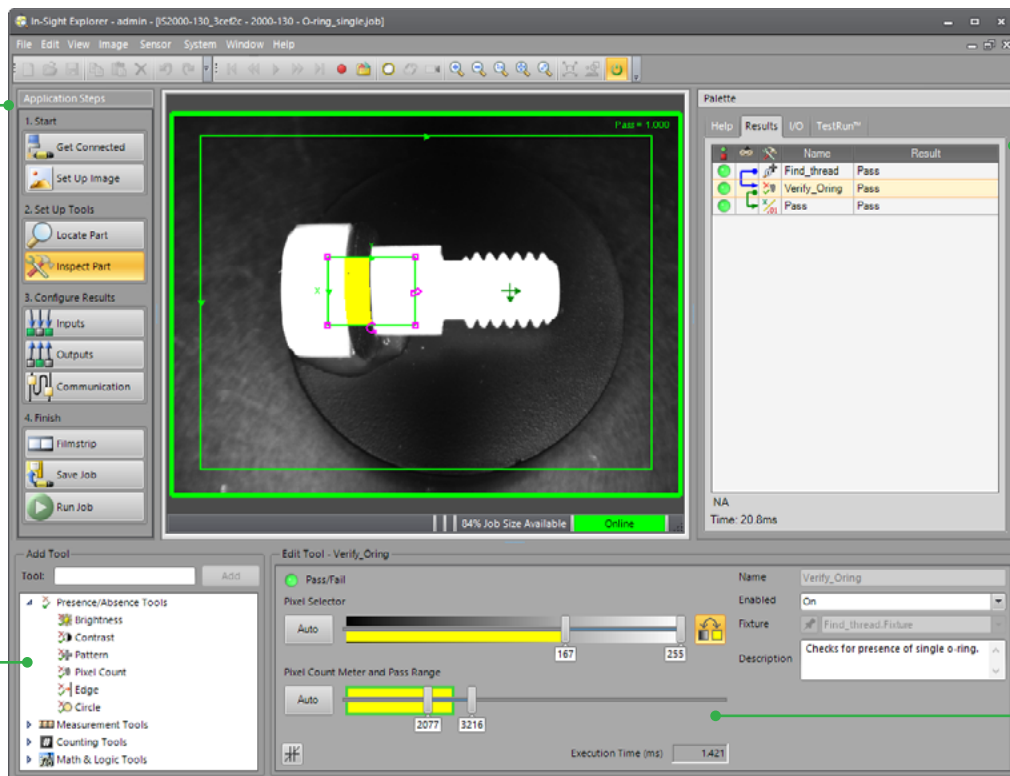
The simple set up of EasyBuilder

Ease-of-use is built into the heart of the In-Sight 2000 series starting with powerful vision tools and an In-Sight Explorer software interface that makes set up simple and assures a seamlessly reliable communications link to other factory automation equipment.



Simple steps guide you through configuring and deploying your application

Choose tools from the list to add them to your inspection

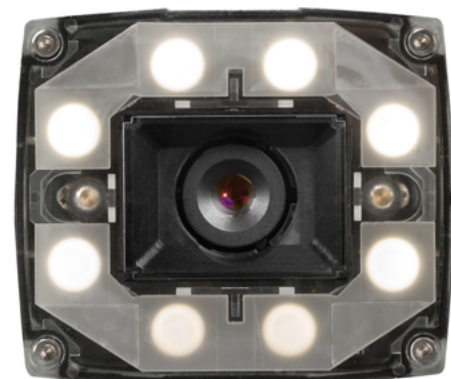


See inspection results at a glance

Point and click controls make it quick and easy to set up any tool to achieve reliable results

Three In-Sight 2000 models

All In-Sight 2000 series vision sensors offer easy application development with the step-by-step EasyBuilder interface. The In-Sight 2000-110 and In-Sight 2000-120 models offer Pass/Fail inspection capabilities. The In-Sight 2000-130 model features a significantly expanded range of location, pixel counting, brightness, contrast, measurement and counting vision tools.



		IN-SIGHT 2000 MODELS		
		2000-110	2000-120	2000-130
User Interface		In-Sight Explorer EasyBuilder		
Imager	Type	1/3 inch CMOS, monochrome		
	Image Resolution	640 x 480 pixels (standard)	640 x 480 pixels (standard) 640 x 480 pixels (2x magnification)	640 x 480 pixels (standard) 640 x 480 pixels (2x magnification) 800 x 600 pixels (2x magnification)
	Acquisition Rate	20 fps	40 fps	
Lens	Standard M12 Lens	8 mm		
	Optional M12 Lenses	3.6 mm, 6 mm, 12 mm, 16 mm, 25 mm		
Lighting	Standard	8-LED diffuse ring light (white)		
	Options	8-LED diffuse ring lights (red and IR)		
		Light filters (red and IR) and polarized light cover		
Vision Tools	Part Location	Pattern	Pattern	Pattern Edge Circle
	Part Inspection	Pattern	Pattern Pixel count Contrast Brightness	Pattern Pixel count Contrast Brightness Edge Circle
	Measurement			Distance Angle Circle diameter
	Counting			Pattern Edge
Communications & I/O	Protocols	Ethernet, EtherNet/IP, PROFINET, SLMP, SLMP Scanner, FTP, RS-232 Text	Ethernet, EtherNet/IP, PROFINET, SLMP, SLMP Scanner, FTP, RS-232 Text	Ethernet, EtherNet/IP, PROFINET, SLMP, SLMP Scanner, TCP/IP, UDP, FTP, RS-232 Text
	Connections	M12: Ethernet M12: Power, I/O and Serial		
	Inputs	2 (1 trigger, 1 general purpose)		
	Outputs	4 (general purpose)		
Mechanical	Dimensions	98 mm x 68 mm x 45 mm		
	Weight	200 g		
Operating	Power	5–24 VDC		
	Operating Temperature	4–40 °C		

COGNEX

Companies around the world rely on Cognex vision and ID to optimize quality, drive down costs and control traceability.

Corporate Headquarters One Vision Drive Natick, MA 01760 USA Tel: +1 508 650 3000 Fax: +1 508 650 3344

Americas

Americas +1 508 650 3000

Europe

Austria +49 721 6639 393
Belgium +31 403 05 00 43
France +33 1 4777 1551
Germany +49 721 6639 393
Hungary +36 1 501 0650
Ireland +0808 168 3001
Italy +39 02 6747 1200

Netherlands +31 403 05 00 43
Poland +48 71 776 07 52
Spain +34 93 445 67 78
Sweden +46 21 14 55 88
Switzerland +49 721 6639 393
Turkey +90 212 306 3120
United Kingdom +0808 168 3001

Asia

China +86 21 5050 9922
India +9120 4014 7840
Japan +81 3 5977 5400
Korea +82 2 539 9047
Singapore +65 632 55 700
Taiwan +886 3 578 0060

© Copyright 2016, Cognex Corporation. All information in this document is subject to change without notice. All Rights Reserved. IDMax, PatMax and Cognex are registered trademarks and OCRMax and the Cognex logo are trademarks of Cognex Corporation. All other trademarks are property of their respective owners. Lit. No. DSDS925B-2016-01

www.cognex.com